

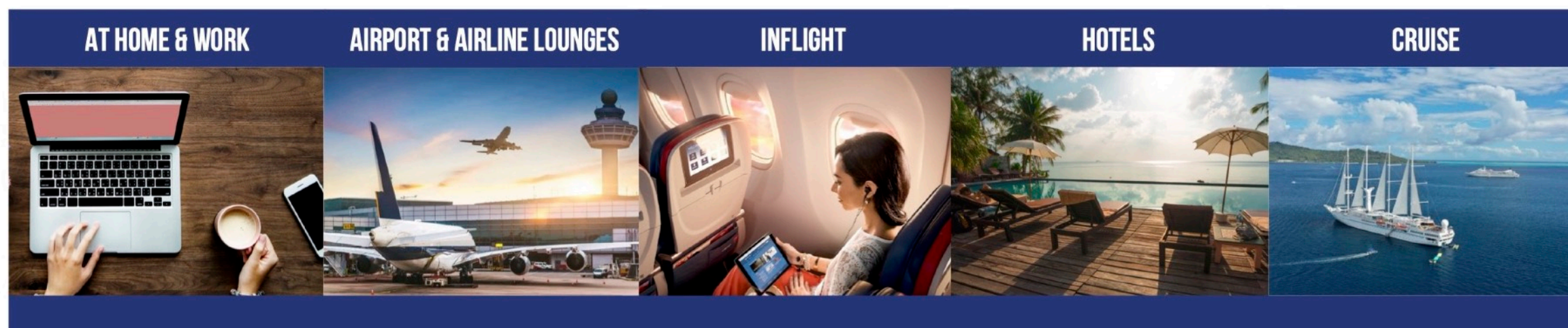
AIRGUIDE MEDIA NETWORK



AIRGUIDE ADVERTISING NETWORK

REACH AFFLUENT GLOBAL BUSINESS & LEISURE TRAVELERS

Elevate Your Global Presence:
Reach an Audience of Over 200 Million Consumers and Businesses.



Lifestyle + Travel Network – Apple News, Apple News Travel, AirGuide Destinations, BBC News Travel, CNN Travel, Conde Nast Traveler, Vogue, GQ, Vanity Fair, Town & Country, Food & Wine, Travel & Leisure, USA Today Travel, Men's Health, Women's Health, Wired, and many more.

Business Network – Apple News Business, AirGuide Business, Bloomberg, BBC News, Business Insider, CNN Business, NBC News, Forbes, FT Financial Times, Inc, LexisNexis, MarketWatch, Reuters, USA Today, Wall Street Journal, Washington Post, Wired, and many more.

The Global Air Traveler

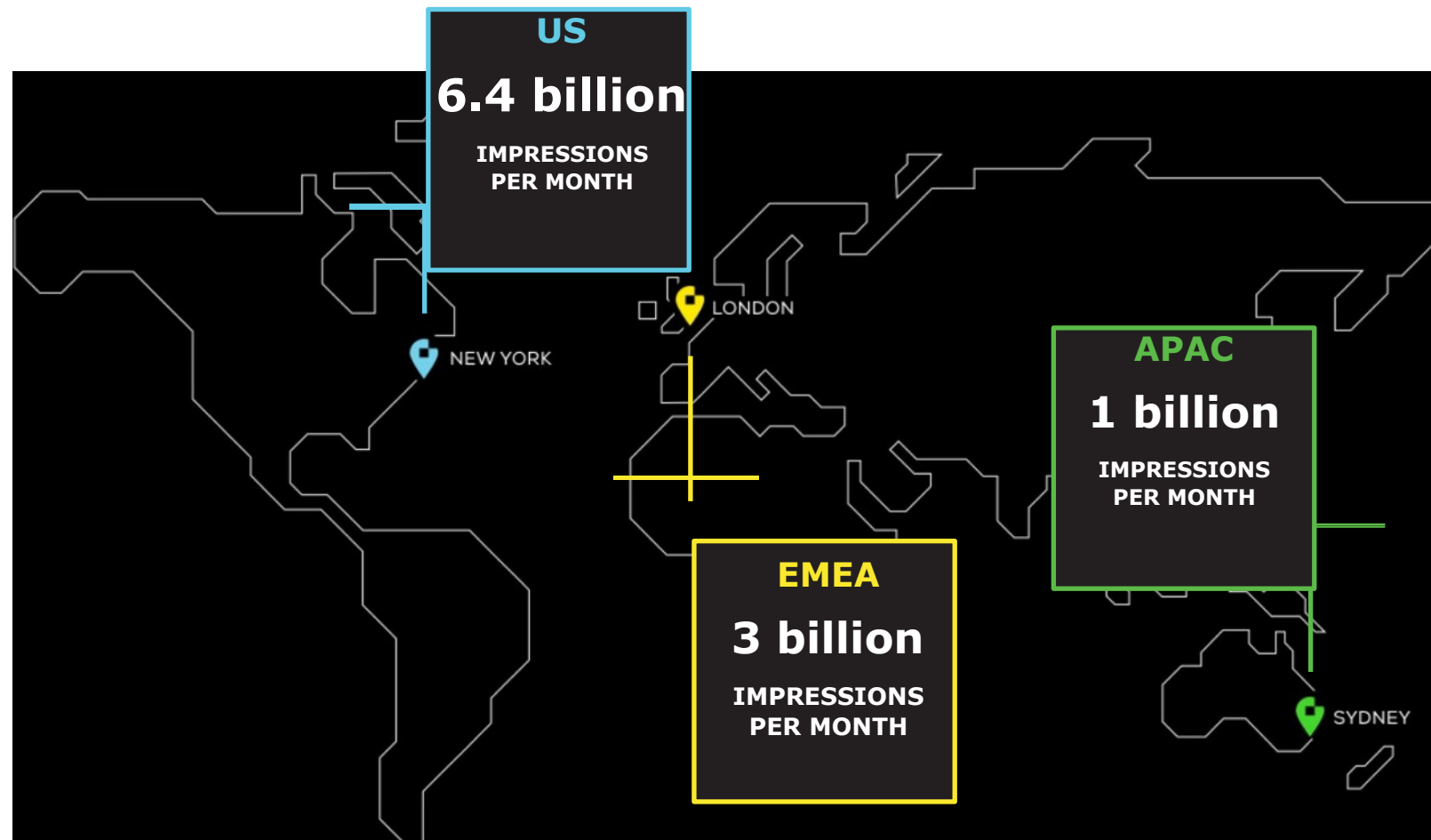
Airport & Airline Lounge WiFi & Screens
Airline Inflight WiFi & Seatback Screens

Targeting & Lead Generation

Real-Time Targeting & Geo-Targeting - We can target the right person at the right place and deliver display banners, videos, sponsored content, eMails to their devices.

Website PiXL Lead Generation – Capture your missed website visitors and re-target them.

LIFESTYLE + TRAVEL & BUSINESS NETWORK REACH



10+ BILLION

Our platform serves more than 10 billion content ads per month.

438 MILLION

Our advertisers reach a global audience of more than 400 million readers.

250

We connect our advertisers with the world's premium publishers – more than 250 around the world.

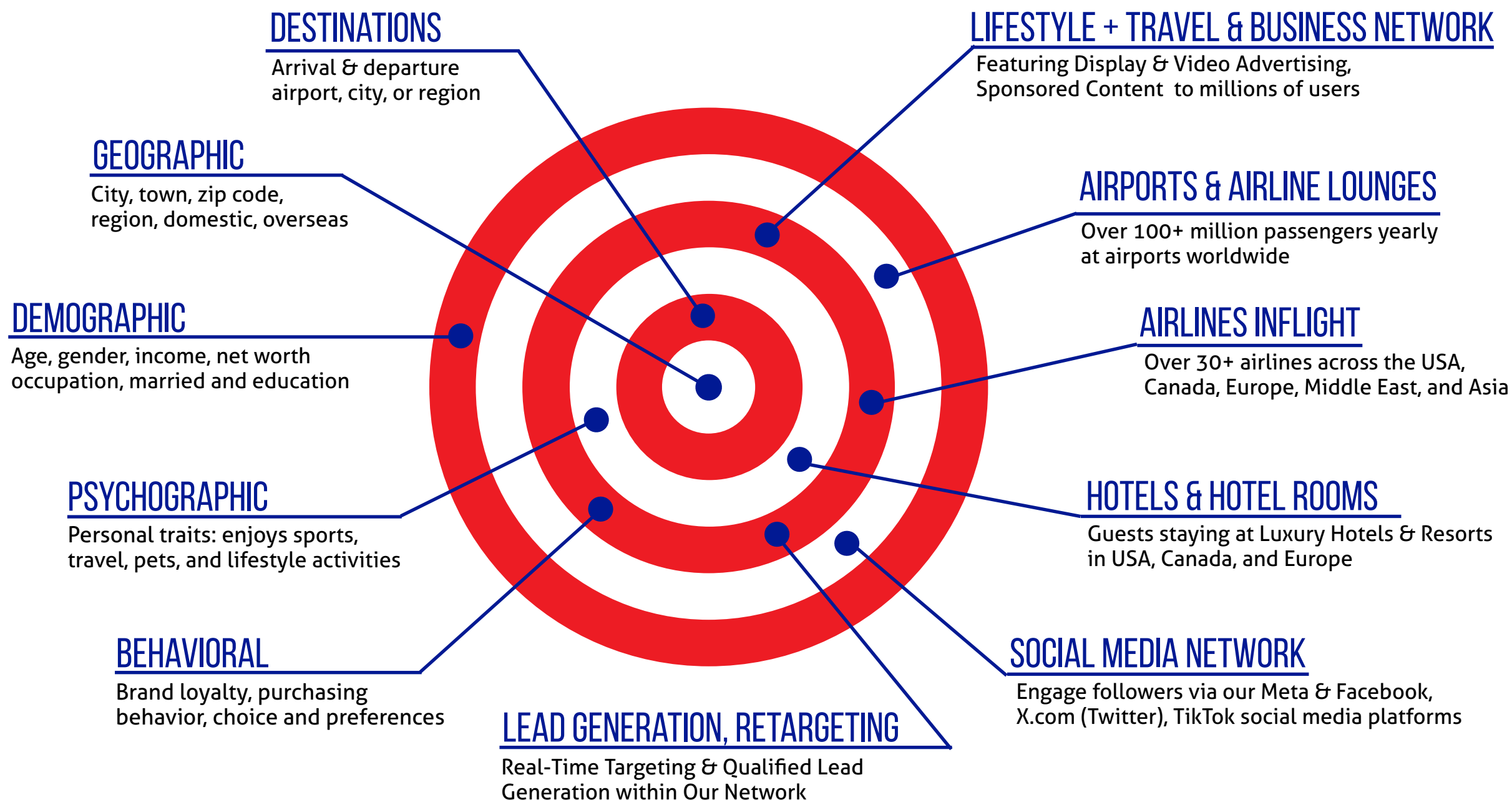
\$100K

The audience we reach is affluent, with readers' average annual income exceeding \$100,000.

WHERE & HOW WE REACH THEM

TARGETING CONSUMERS, BUSINESSES & TRAVELERS

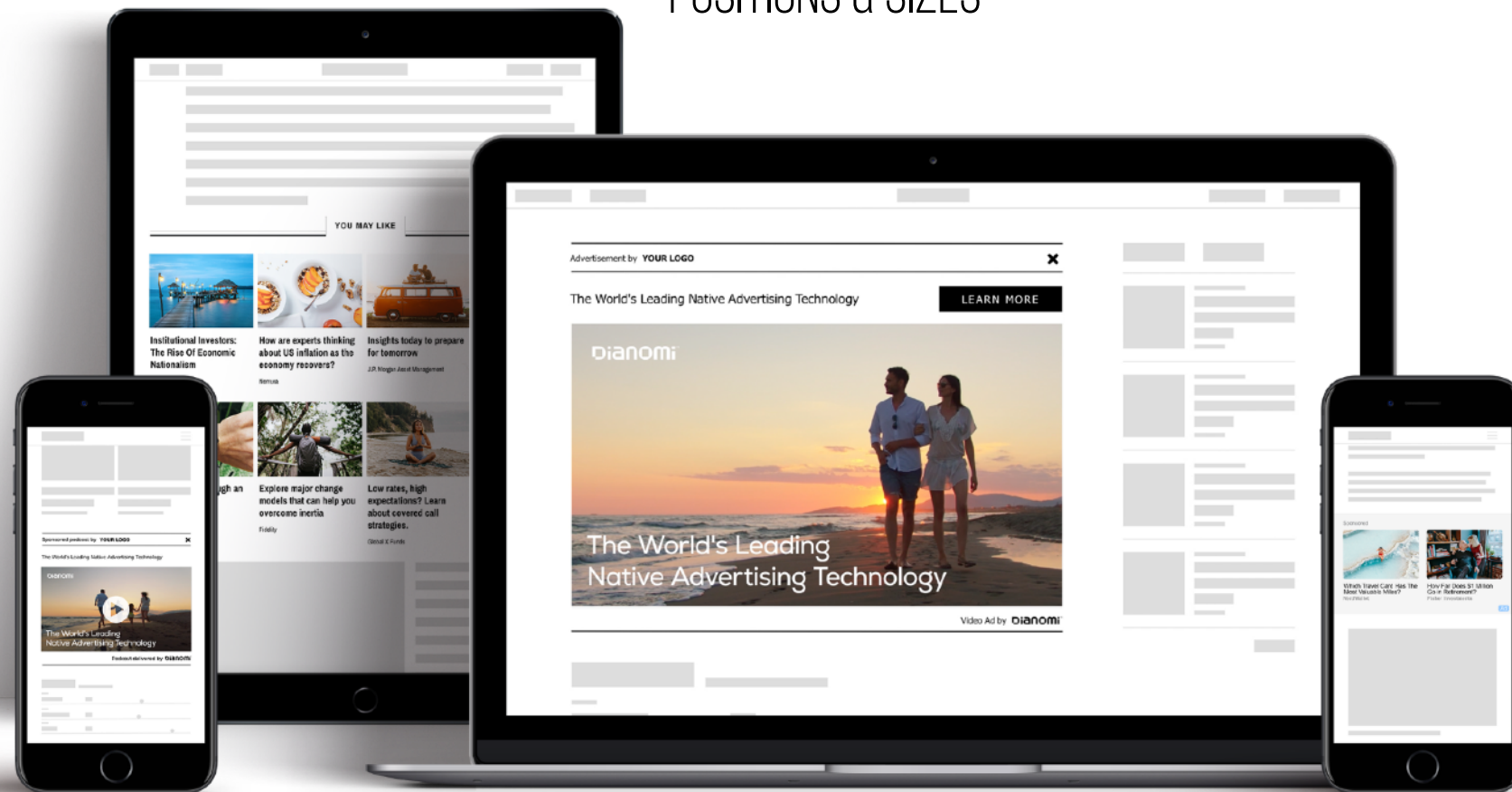
AirGuide Advertising Network - Elevate Your Global Presence &
Harness the Power of Connection:
Reach an Audience of Over 200 Million Consumers and Businesses.



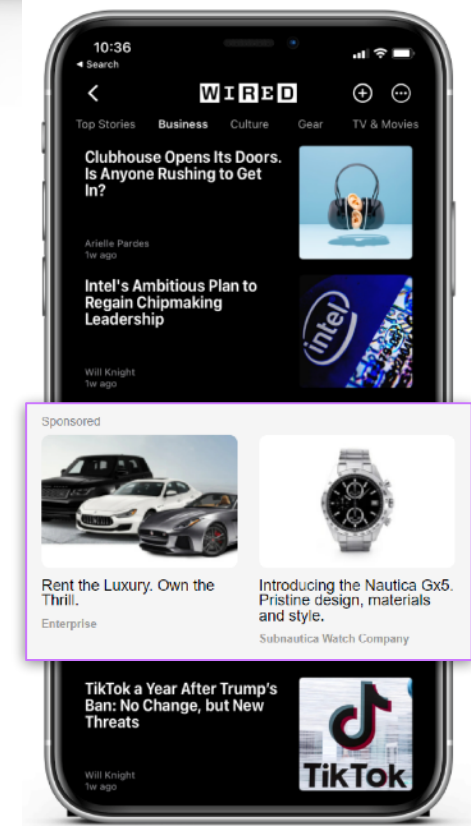
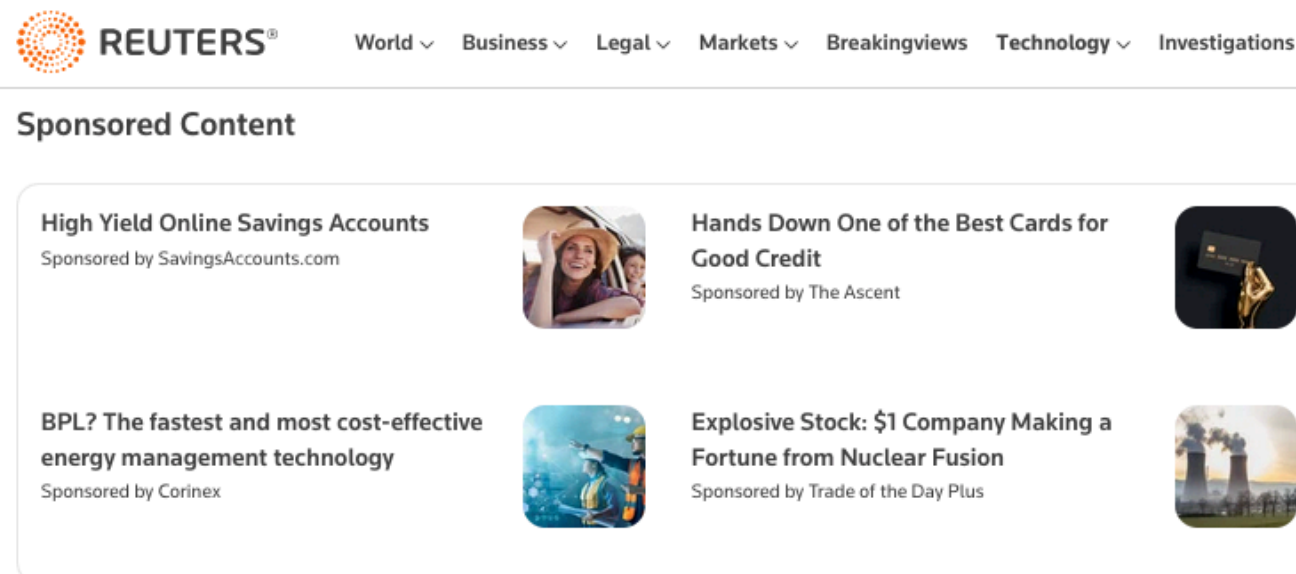
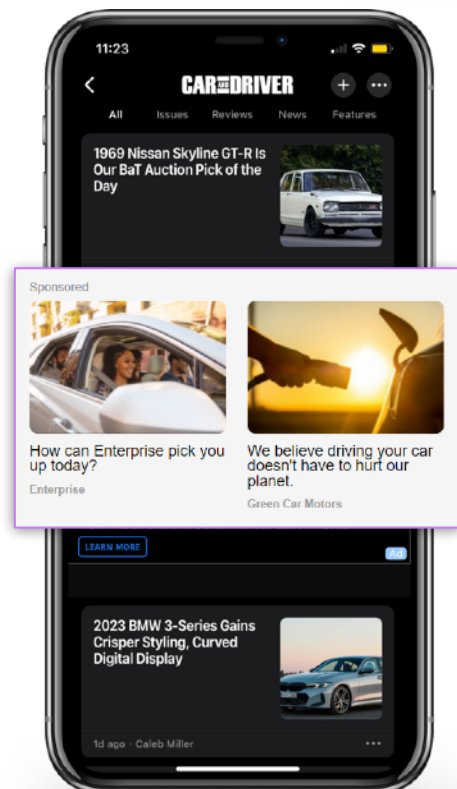
ADVERTISING



DISPLAY & VIDEO ADVERTISING POSITIONS & SIZES



Most Popular Display Sizes: 300x250, 400x320, 728x90
Mobile: 300x250, 320x50

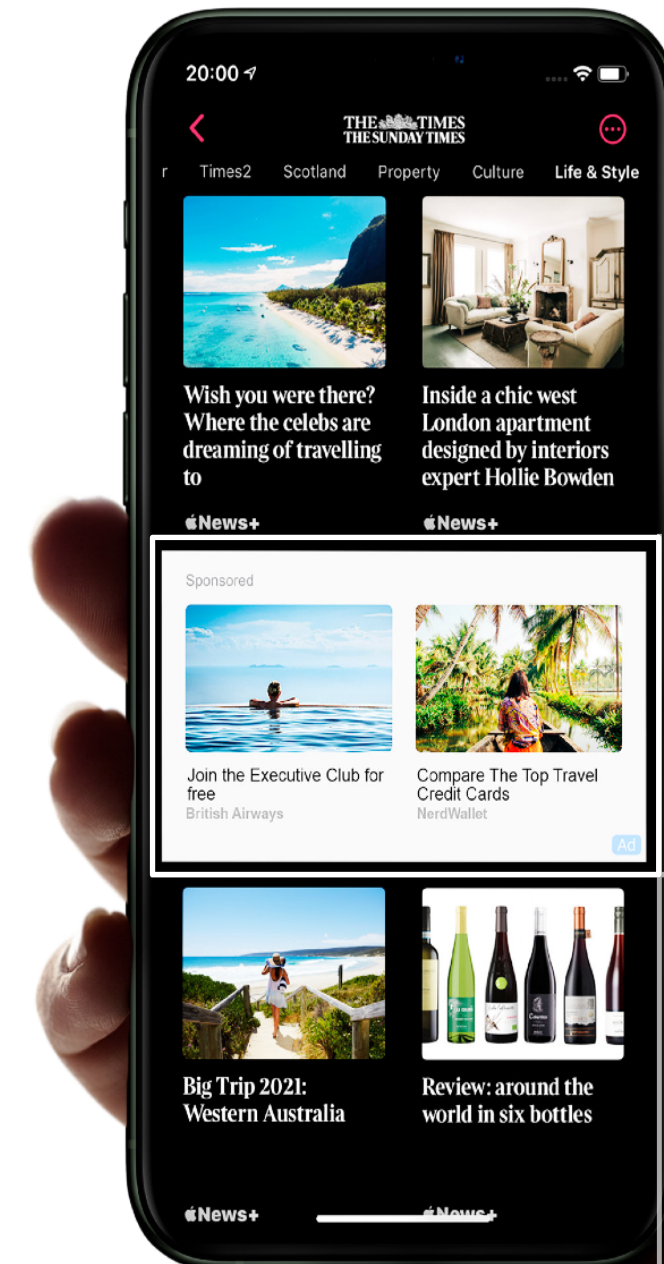


TARGETING & GEO-TARGETING CONSUMERS, BUSINESSES & TRAVELERS

Real-Time Targeting & Geo-Targeting – We have the capability to target specific users in our entire network and beyond.

Geo-targeting is the method of determining the geolocation of a visitor and delivering content to that visitor based on their location.

- We can target where they live, where they work, or specific location: airport, hotel, event, trade show, mall, business, building, street, competitor's location.
- Access to a Real Person @location.
- We deliver banners, videos, call to action, sponsored content, eMails to the user's devices.
- Deliver to social media: Meta & Facebook, X.com (Twitter), TikTok.
- Lead Data: We capture customer data with names, telephone numbers and emails (US only).
- Reporting Data: Full reporting and analysis capabilities to monitor all content and advertising campaign performance.

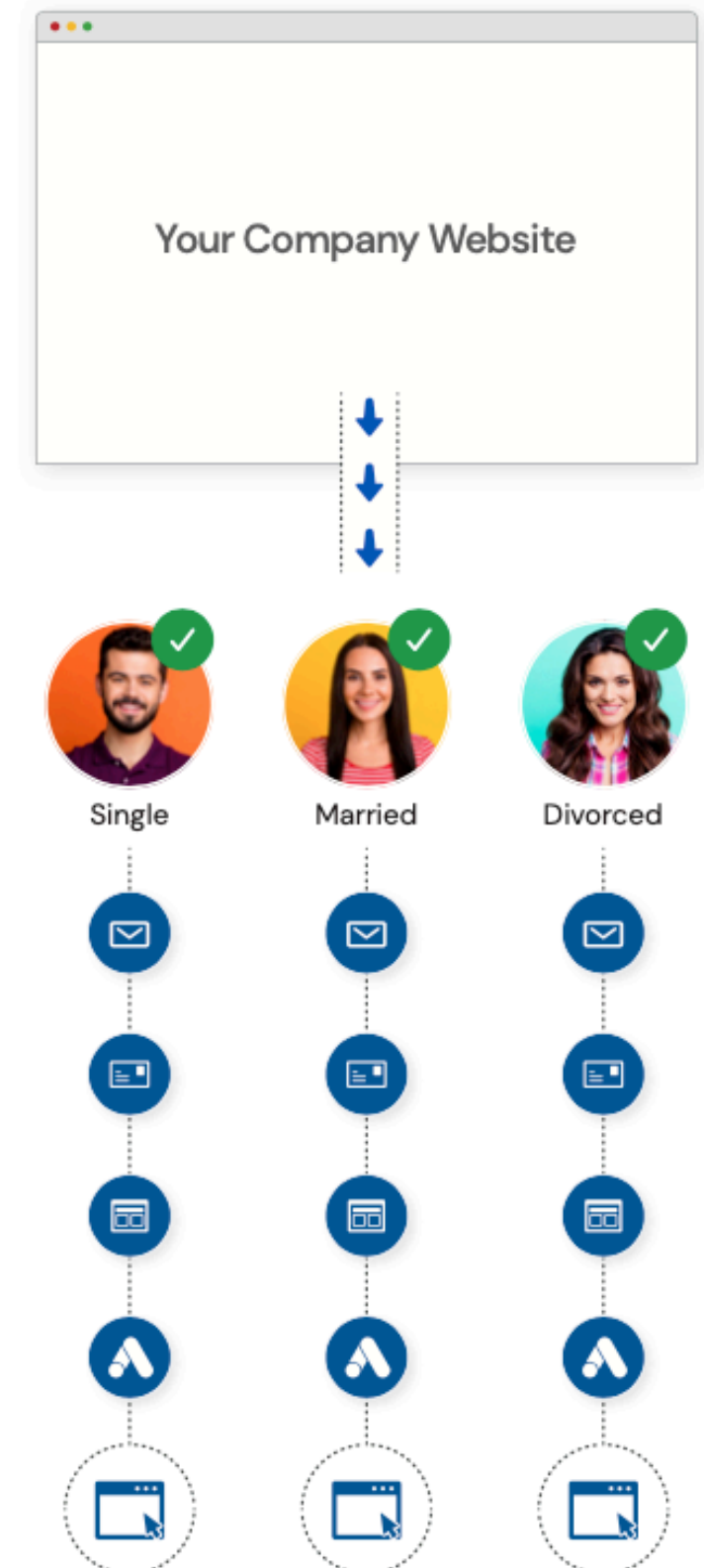


CAPTURE MISSED VISITORS & LEAD GENERATION CONSUMERS, BUSINESSES & TRAVELERS

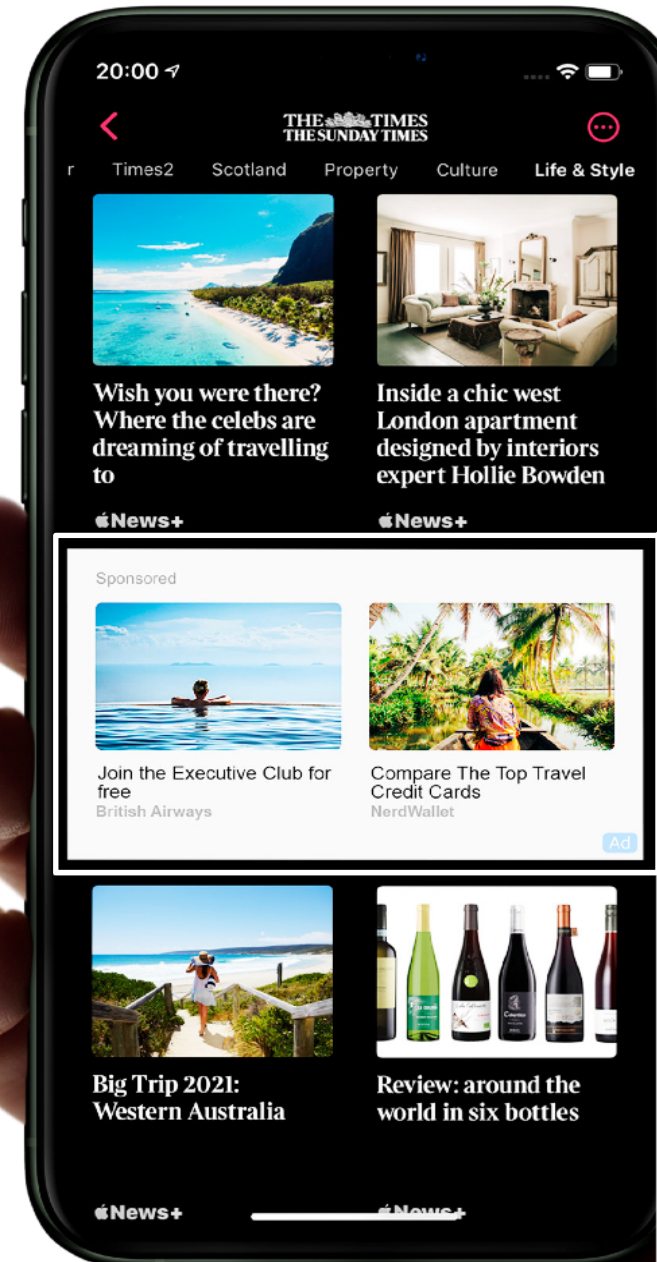
Website PiXL Lead Generation – Capture your missed website visitors. Our lead generation solution captures 95% of your visitors, attracting, engaging, and converting them into qualified leads.

The platform effectively targets and converts customers, enabling outreach to those with a genuine interest in your products or services.

- Capture your missed visitors by placing a unique pixel on a website to capture visitors.
- Re-target visitors who were interested but did not act.
- Lead Data: We capture the following attributes: name, address, email, and more.
- Data is updated daily to optimize keyword searches focused on your website visitors.
- We deliver: display banners, videos, sponsored content, eMails to the user's devices.
- We are IP Based, not cookie based. Our accuracy is probably the best in the business.
- We are SOC2 Certified for maximum security.
- Full reporting and analysis capabilities to monitor all content and advertising campaign performance.



TRUSTED BY PREMIUM BRANDS



Sponsored Content unit on The London Times

OUR REACH &
DISTRIBUTION

AIRGUIDE

WHERE WE REACH THEM TARGETING CONSUMERS, BUSINESSES & TRAVELERS





We reach 200+ million consumers and businesses.
AirGuide Advertising Network connects you to
a captive audience at all the key touch-points.

Reach Global Business & Leisure Travelers
The Global Air Traveler
Targeting Consumers & Travelers

ARAM GESAR
CEO

AGESAR@AIRGUIDE.US
TEL: +1646 808-9057